



# Tobacco Prevention & Control in Tennessee: Welcome to Tobacco Nation

Liz Johnson, MPH  
Director, Tobacco Control Program

April 8, 2021

# Learning Objectives

- Understand the tobacco prevention and control landscape in Tennessee
- Recognize how populations are disproportionately affected by tobacco
- Understand the need for healthcare provider intervention
- Assist users quit attempt with evidenced-based strategies

# Tobacco Nation



**TOBACCO  
NATION**  
THE DEADLY STATE OF SMOKING  
DISPARITY IN THE U.S.



- 13 states dubbed “Tobacco Nation”
- Tennessee is part of Tobacco Nation
- Tobacco Nation states have similar characteristics
- Tobacco Nation has some of the highest smoking rates in the WORLD

Truth Initiative. 2019. Tobacco Nation: An Ongoing Crisis. <https://truthinitiative.org/tobacconation>



# Tobacco in Tennessee



## State of Tobacco Control 2021



**Tobacco Prevention and  
Cessation Funding**



**Smokefree Air**



**Tobacco Taxes**



**Access to Cessation  
Services**



**Flavored Tobacco  
Products**

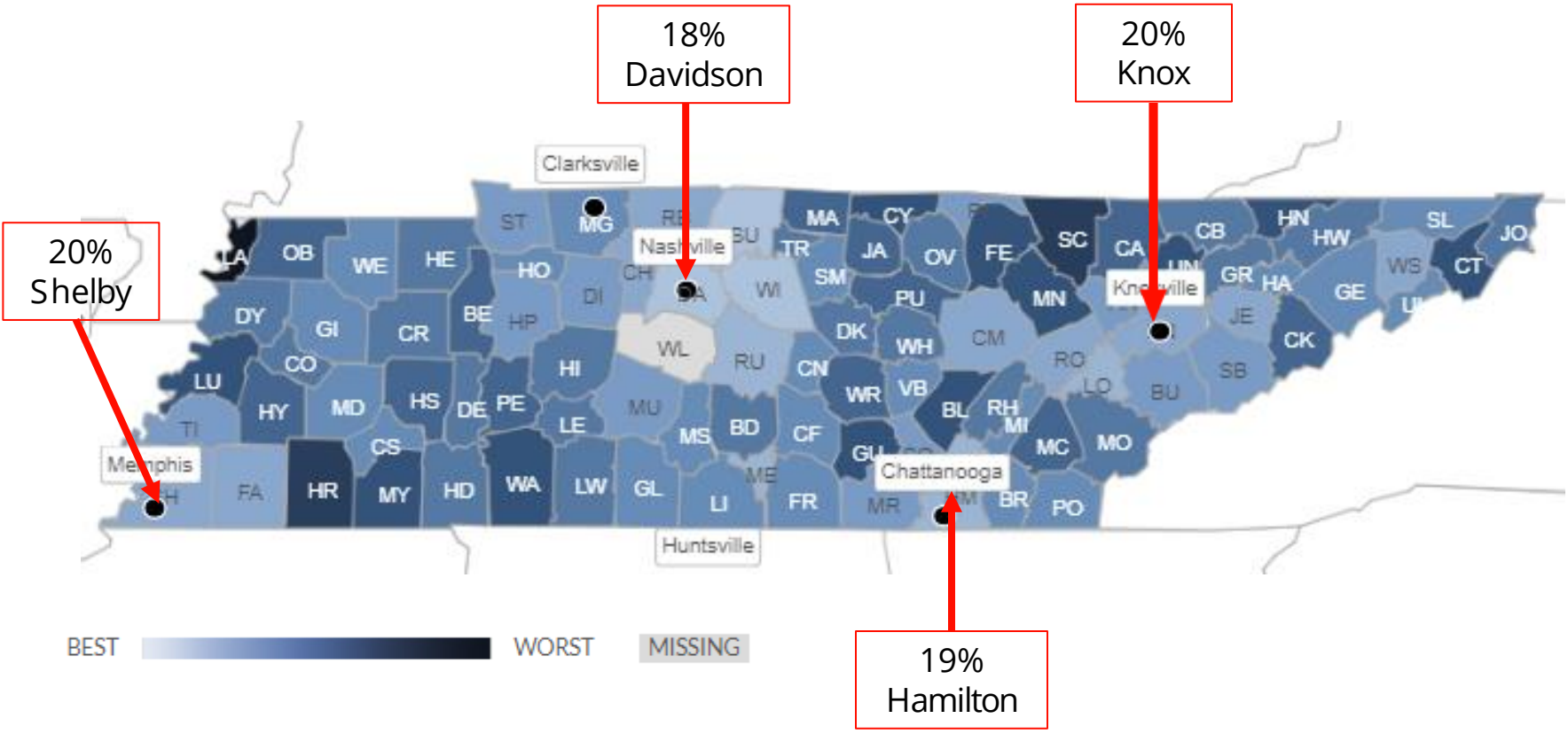
# 43<sup>rd</sup>

According to America's Health Rankings, TN  
ranks 43<sup>rd</sup> for overall tobacco use

American Lung Association. State of Tobacco Control-Tennessee. 2021 <https://www.lung.org/research/sotc/state-grades/tennessee>

United Health Foundation. America's Health Rankings-Annual Report Tennessee. 2021. <https://www.americashealthrankings.org/explore/annual/measure/substanceuse/state/TN>

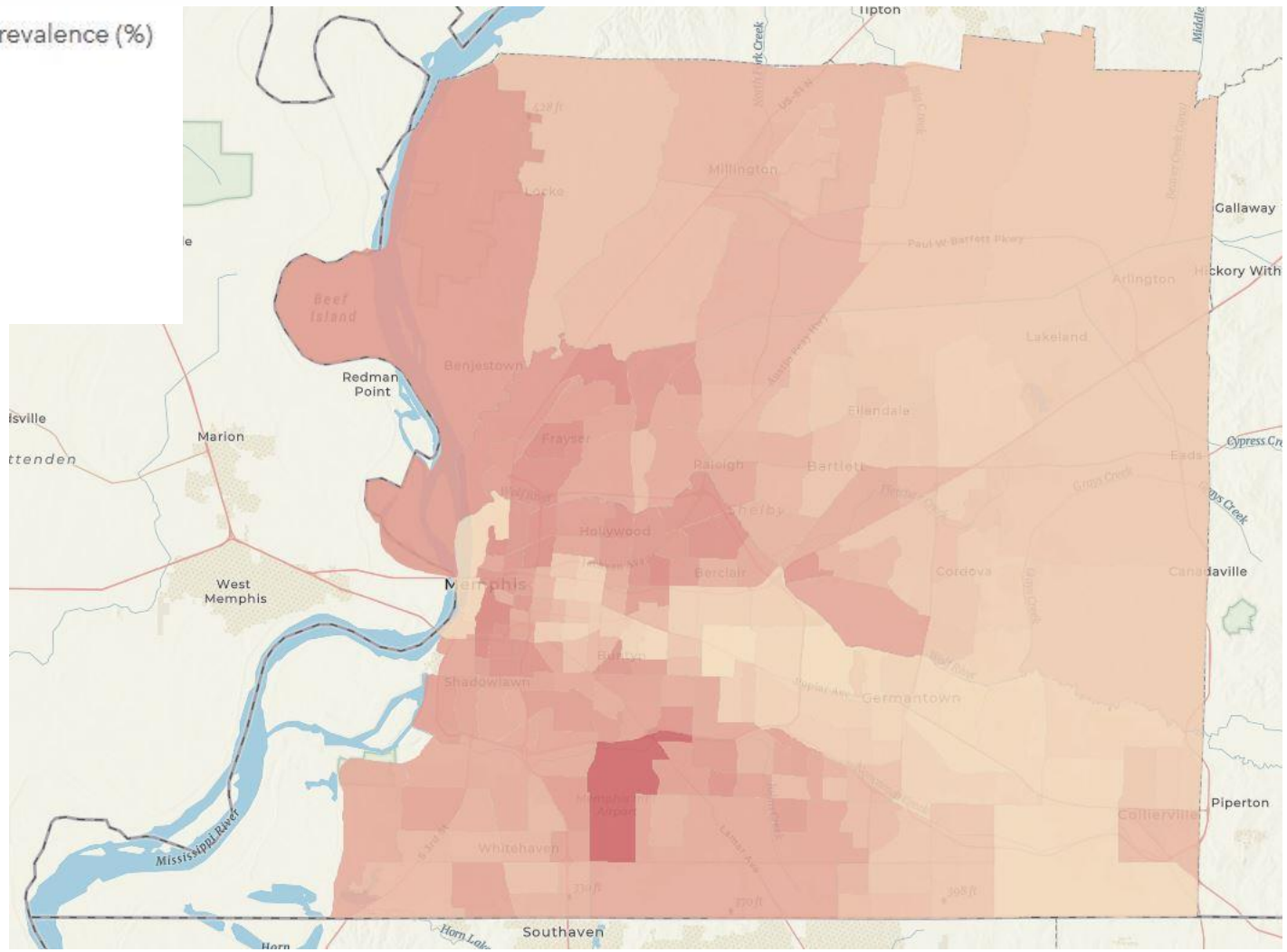
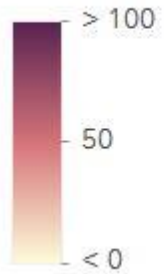
# Tobacco in Tennessee



America's Health Rankings analysis of America's Health Rankings composite measure, United Health Foundation, AmericasHealthRankings.org, Accessed 2021.

# Tobacco in Shelby County

Current smoking crude prevalence (%)



Source: BRFSS 2019.

# Tobacco-Related Disparities

What are tobacco-related health disparities?

- Tobacco-related health disparities are differences in health stemming from tobacco use and exposure
- Groups facing disadvantage - African Americans, Native Americans, people who identify as LGBTQ+, people with behavioral disorders, and people with low incomes
- Tobacco-related health disparities result from differences in use and from social and environmental inequalities that impact how use affects people



# Reasons Behind Disparity?

- Tobacco Industry targeting
- Community-specific stressors
- Individual and intersectional stressors
- Lack of access to healthcare
- Social norms



# Healthcare Provider Intervention

## Implement Clinical Protocols



- Clinical practice guidelines
- Brief counseling (5 As, AAR, AAC)
- Combined pharmacotherapy and behavioral counseling
- QuitLine referrals

# Help Others Quit

- Make quit attempts together
- Celebrate small successes & avoid criticism if they slip
- Suggest the QuitLine & other programs



**smokefree.gov**



quit**START**

 **smokefree**TXT

# Sources

Truth Initiative. Tobacco Nation: An Ongoing Crisis. 2019. <https://truthinitiative.org/tobaccoaction>

American Lung Association. State of Tobacco Control-Tennessee. 2021.  
<https://www.lung.org/research/sotc/state-grades/tennessee>

United Health Foundation. America's Health Rankings-Annual Report Tennessee. 2021.  
<https://www.americashealthrankings.org/explore/annual/measure/substanceuse/state/TN>

You Can Help Your Patients Quit Tobacco Use. 2019.  
<https://www.cdc.gov/tobacco/campaign/tips/partners/health/materials/You-Can-Help-Your-Patients-Quit-Tobacco-Use-508.pdf>

# Resources & Articles for Further Reading

*Washington, Harriet A. 2002. Burning Love: Big Tobacco Takes Aim at LGBT Youths. <https://www.ncbi.nlm.nih.gov/pmc/articles/PMC3222279/>*

*Center for Black Health and Equity. <https://centerforblackhealth.org/>*

*Best Practice User Guides: Health Equity. CDC. 2015. <https://www.cdc.gov/tobacco/stateandcommunity/best-practices-health-equity/pdfs/bp-health-equity.pdf>*

## **For Healthcare Providers:**

*You Can Help Your Patient Quit Tobacco Use.*

*<https://www.cdc.gov/tobacco/campaign/tips/partners/health/materials/You-Can-Help-Your-Patients-Quit-Tobacco-Use-508.pdf>*

*Million Hearts Tobacco Cessation Change Package <https://millionhearts.hhs.gov/tools-protocols/action-guides/tobacco-change-package/index.html>*

*TN QuitLine Referral Portal <https://www.ighquitline.com/referrals/login.php>*



**Liz Johnson, MPH**  
**Director, Tobacco Control Program**  
**615-253-2991**  
**[liz.johnson@tn.gov](mailto:liz.johnson@tn.gov)**